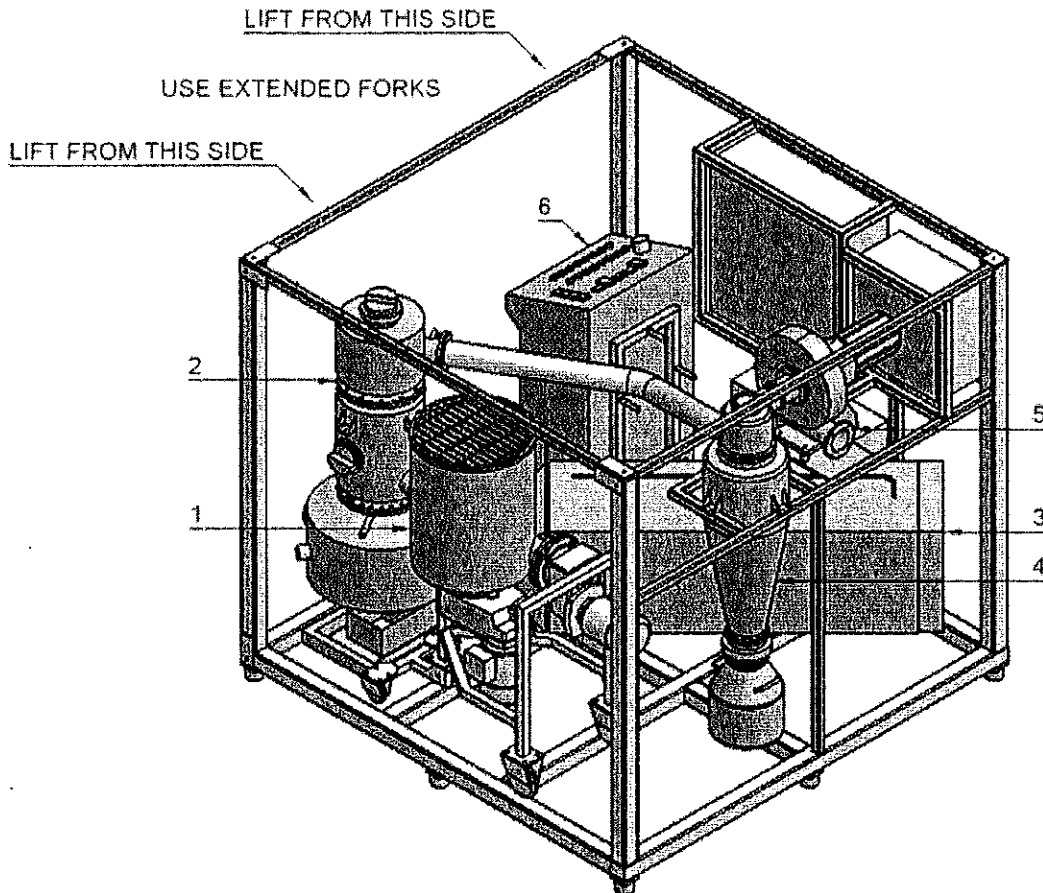


SWF Mobile Unit

Overall dimensions for the unit:

Length: 2200 mm Width: 2200 mm Height: 2110 mm

Weight: approx. 600 kg



The unit is delivered in a 20' container.

The unit can be lifted with a forklift with extended forks.

SWF Mobile Unit

Technical data:

Air flow: 450-630 kg/h
Inlet temperature: 100-350 °C
Outlet temperature: 60-150 °C
Water evaporation: 0-55 kg/h
Max. powder rate: 100 kg/h
Max. feedrate: 150 kg/h

Plant is not designed for running on EX classified products

Gas supply:

1. Natural gas: pressure 0,1-16 bar g / max. 7 Nm³/h
 2. Propane gas: pressure 0,1-16 bar g / max. 5 Nm³/h
- Connection on gas pipe train: DN 25 / PN 16 flange (pressure 0,36-16 bar g)
1"RG female (pressure 100-360 mbar g)

Power supply:

3 x 400 V / 50 Hz / 32 A. Cable included has a length of 6,5 m.

Compressed Air supply:

5-8 bar g approx. 1 Nm³/h
Connection: ½" RG / ø 12 mm pipe

Exhaust Air:

dusty air – pipe connection ø 100 mm on exhaust fan outlet.
Supplied with a flexible hose ø 100 mm - length 5 m.
Supplied with a loose filter bag for powder separation (will not absorb the finer particles).
For fine powder separation you have to install a filter unit.

Ambient conditions :

Minimum ambient temperature: - 20 °C
Maximum ambient temperature: + 40 °C

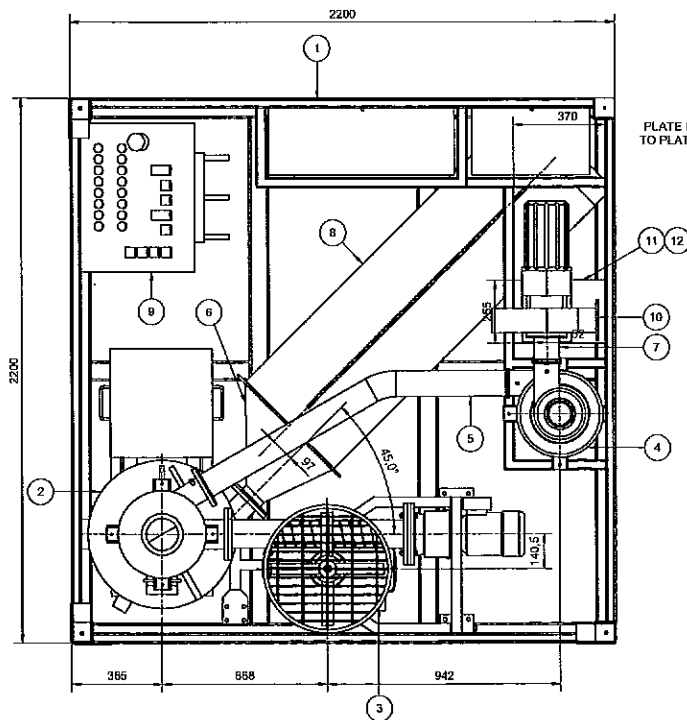
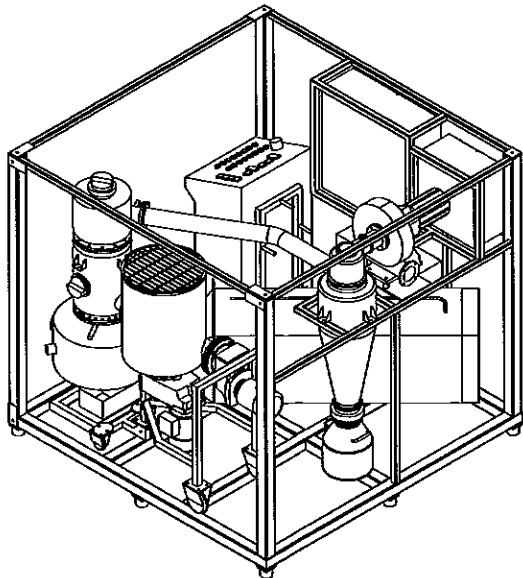
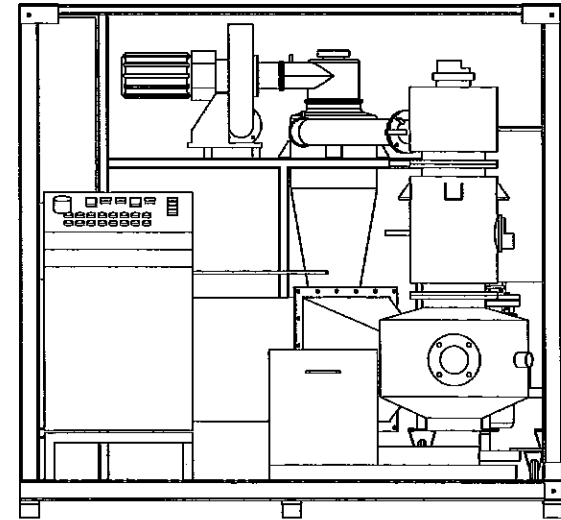
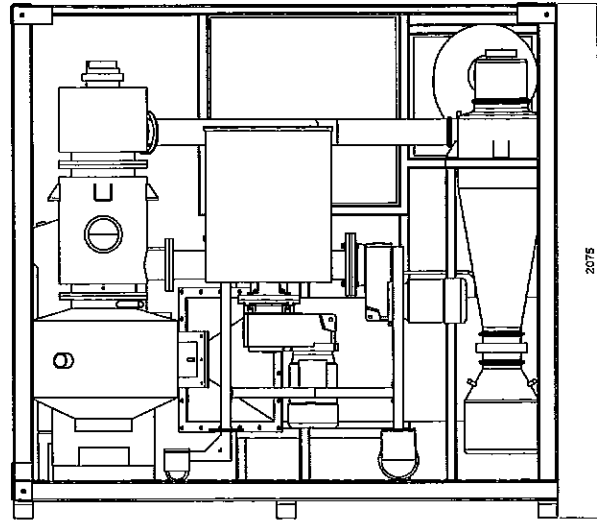
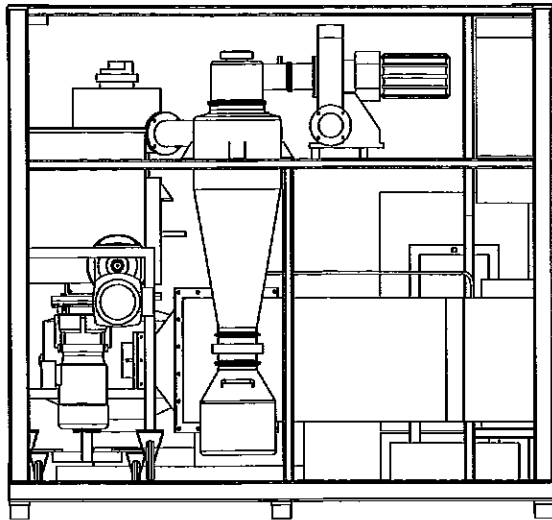
Vibrations and emissions:

Very little or no vibrations will be transferred to the surroundings when the SWIRL FLUIDIZER™ rental unit is operational.
No emissions will occur under normal operation conditions, provided flexible connections and flange seals are properly tightened and intact.

The SWF unit is CE-marked acc. to Machinery Directive 98/37/EC

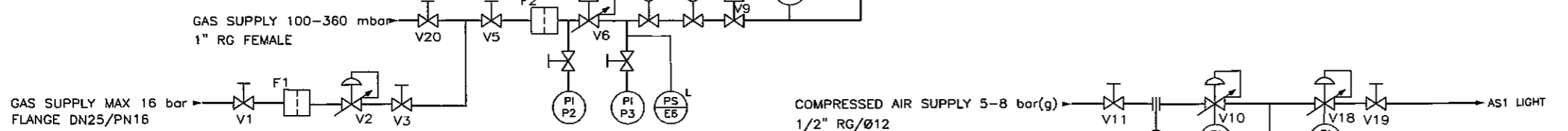
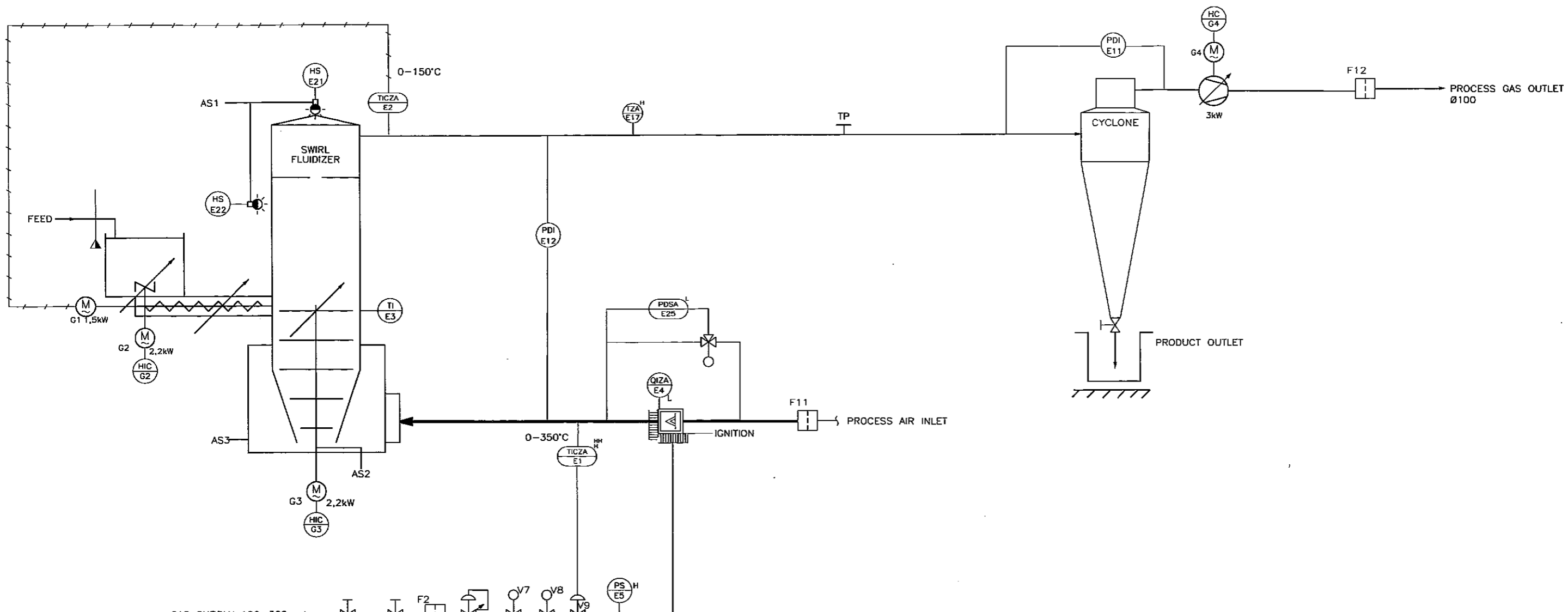
The SWF unit is built acc. to following norms:

EN ISO 12100-1, EN ISO 12100-2, EN 1672-2, Low Voltage Directive 2006/95/EC



POS. 11
PLATE FOR VENTILATOR IS FITTED AND WELDED
TO PLATFORM DURING MONTAGE OF VENTILATOR
DIMENSIONS = 440x255x10

- 0001				1110	Yes
Part Variant	Part Name/Description	Part Material	Part Dimension	Classification	DOM Spec
B	EDITED DESIGN			RUJ	MOC
Rev	Description	Draw	Check	Appr	Date
					2009-04-17
GEA Niro AS <small>Niro AS Godsmiddvej 205 DK-2650 Søndborg Denmark Tel +45 3954 5154 Fax +45 3954 5620</small>					
SWF 8.3 MOBILE UNIT LAYOUT				Scale	1:10
				Format	A1L
				Category	2
<small>This document is COPYRIGHTED by and is the property of GEA, all rights reserved. It must not be copied, published or in any way disseminated to third parties without prior written consent of GEA.</small>				Document No	752699
				Rev	B



D GENERAL CHANGES				RUJ	MOC	MOC	2009-06-08
Rev	Description	Creo	Check	Appr	Date		
<p>GEA Niro A/S Niro A/S Gladsøvej 305 DK-2860 Søborg Denmark Tel +45 3954 5454 Fax +45 3954 5800</p>							
<p>FLOW SHEET INSTRUMENTATION SWIRL FLUIDIZER MOBILE UNIT 128-1650-1-01</p>							Scale 1:1
							Format ATL
							Category 3
<p>This document is COPYRIGHTED by and is the property of Niro, all rights to copyright, patented or patentable design or invention being reserved. It must not be copied (in whole or in part), used for manufacture or disclosed to others without prior written consent of Niro.</p>							Rev 3
						Document No 759002	D